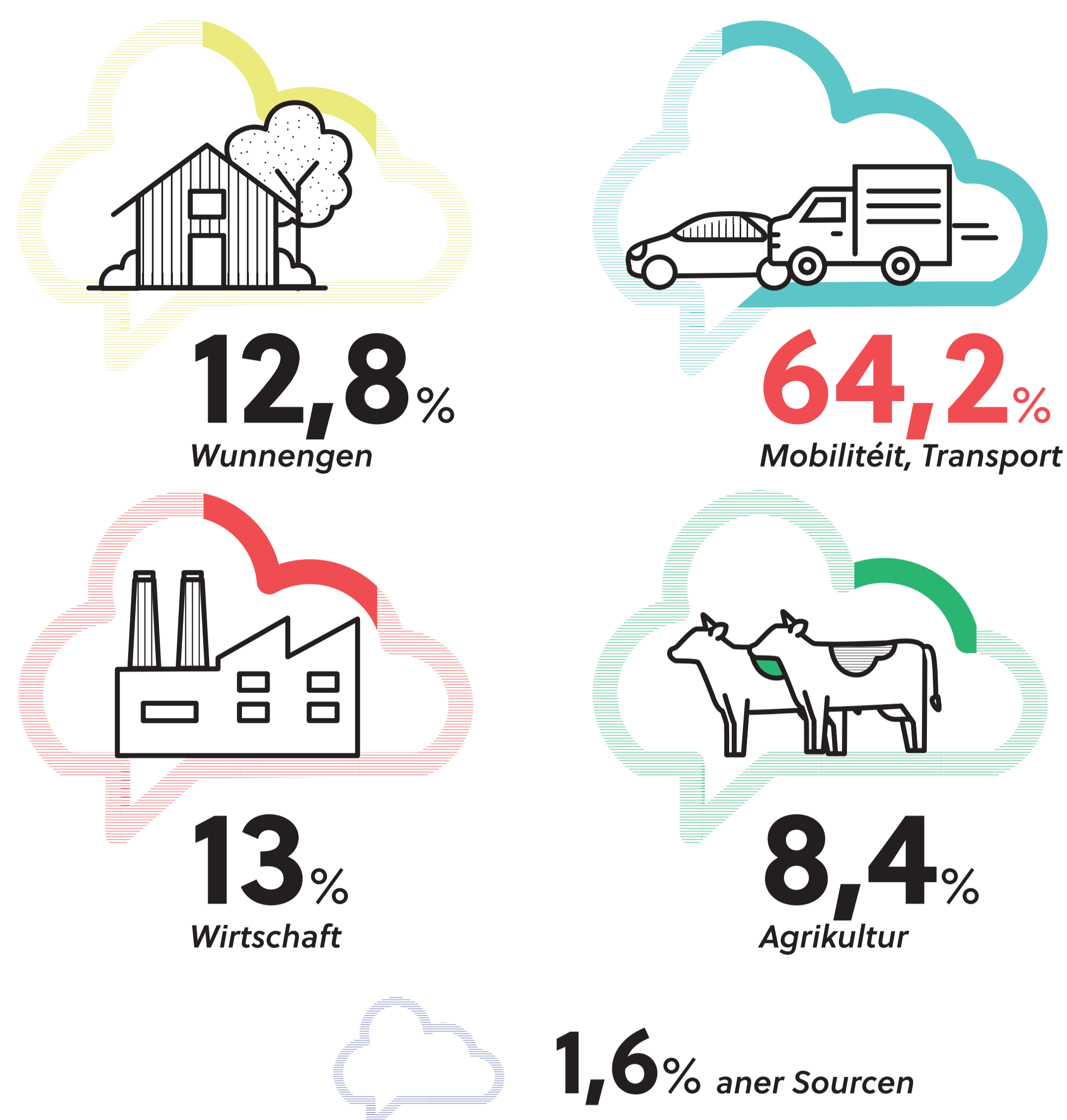


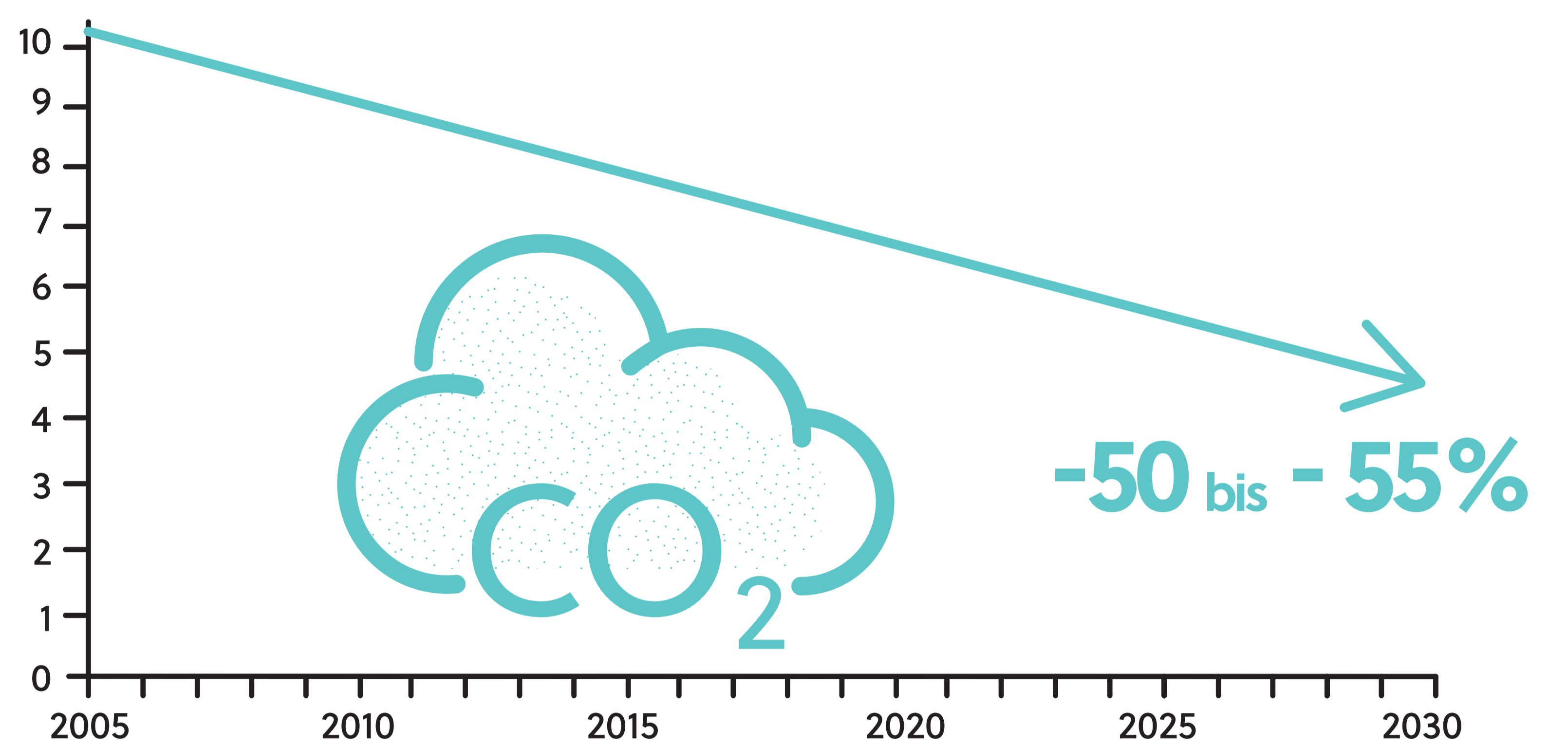
## Nohalteg Liewen

- > Sozial
- > Ëmwelt
- > Ekonomesch

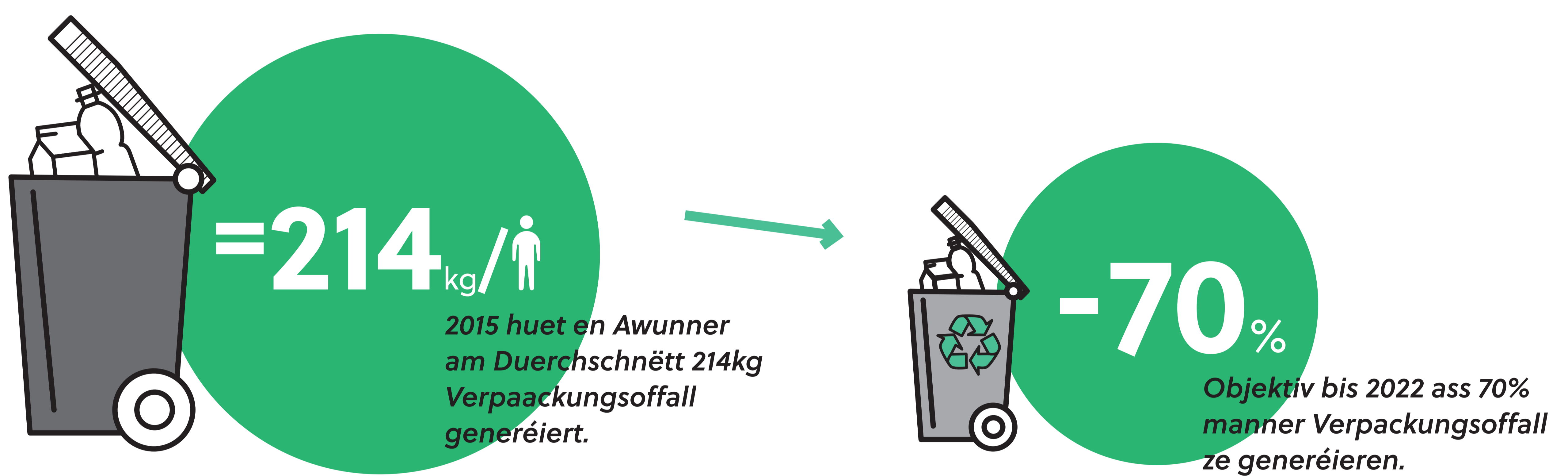
### Wou kënt den CO<sub>2</sub> zu Lëtzebuerg hier?



### Geplangte Reduktioun vun Zäregasemissiounen zu Lëtzebuerg bis 2030

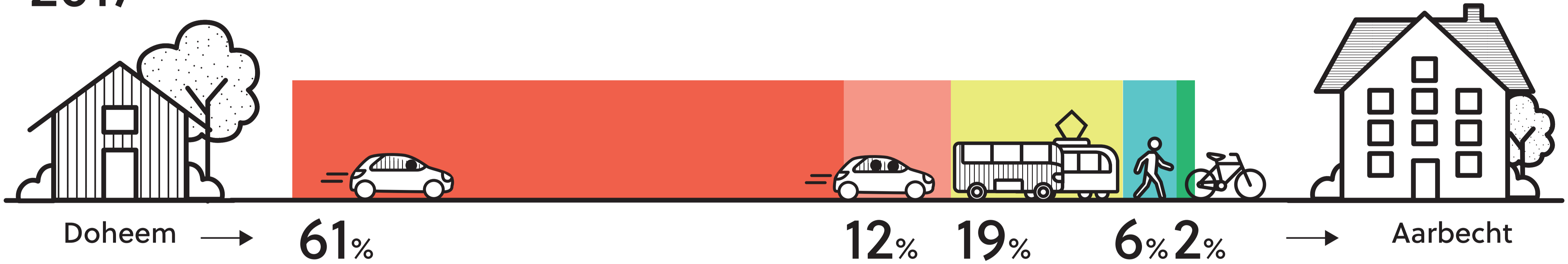


## Offall

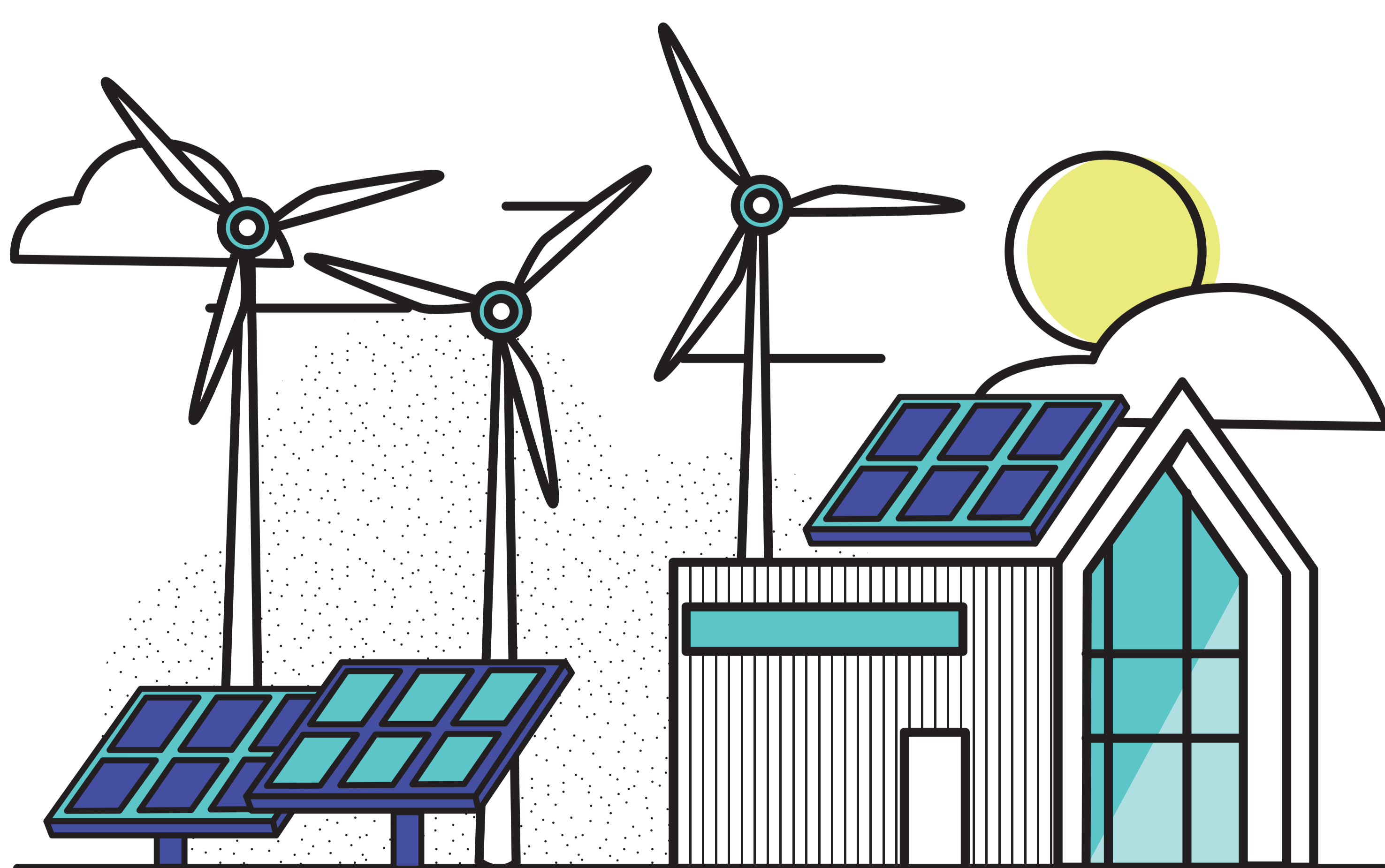
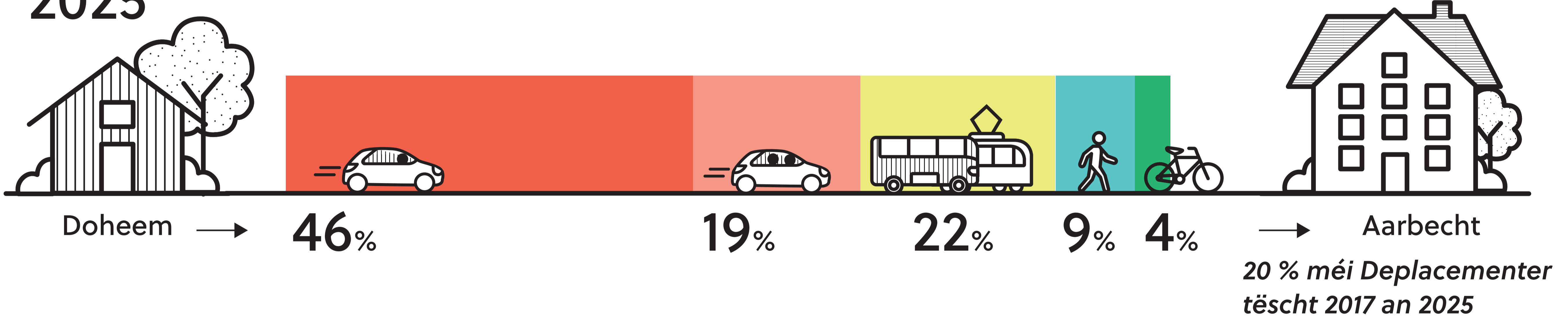


## Mobilitéit

2017



2025



## Energie

**8 %** Stroum aus erneierbarer Energie 2017

**4x méi** Stroum aus erneierbaren Energien tëscht 2020 a 2030